

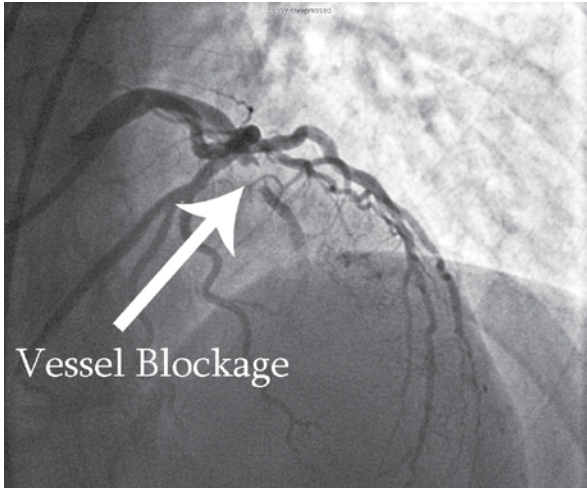


American Patient Transport Systems, Inc.

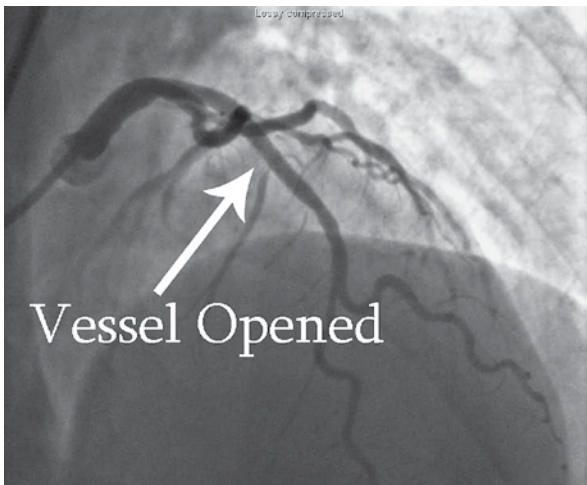
P.O. Box 652 • Hazleton, Pennsylvania 18201 • 570-459-6622 • aptsems.com

2010 – 2011 Membership Application

American Patient Transport Systems, Inc (APTS) is the leading provider of emergency ambulance, non-emergency ambulance and wheelchair/stretchers service in the Hazleton Area. Our dedicated staff of over 70 employees assisted over 15,000 patients last year alone. We are constantly working to improve our service and to be ready when you need us.



Blocked vessel upon arrival



Vessel opened shortly after arrival



APTS was recognized for their quick response time and professional care while helping to set an MI Alert record.

Paramedic John Veen (l) and EMT Brian Cara (r) display the plaque they received from Hazleton General Hospital recognizing their life saving efforts this summer. This patient was transported from their residence to Hazleton General Hospital and subsequently flown via MedEvac to Lehigh Valley Hospital in Allentown. A catheterization was performed and the vessel opened, thus saving a great deal of heart muscle. All of this was accomplished in 51 minutes! Pictured to the left is an example of a before and after Balloon Catheterization.

2010 – 2011 Membership information

American Patient Transport Systems, Inc. (APTS) is the Advanced Life Support / Paramedic and Basic Life Support provider for the City of Hazleton, Hazle Township and Beaver Meadows.

If you live in one of these municipalities, you are eligible to become a member of APTS.

We also serve as the primary ALS / paramedic provider for the Boroughs of West Hazleton, Freeland and McAdoo as well as Foster, Kline, Sugarloaf and East Union Townships. We are proud to assist the Freeland, McAdoo, Nuremberg and Sugarloaf Volunteer Ambulance Associations in these areas. If you live in these municipalities, we encourage you to join their associations as you will be covered if we respond.

APTS membership is open for Hazleton, Hazle Township and Beaver Meadows residents only.

Yes! I want to make sure that I have the coverage I need

___ Single Membership (\$25)

___ Senior Individual 65+ yrs (\$20)

___ Family Membership (\$40)

___ Senior Household 65+ yrs (\$30)

Please make your check payable to APTS.

Fill in name, address or make corrections below.

NAME: _____
ADDRESS: _____
CITY, ST ZIP: _____

Mail to:

APTS Membership
PO Box 652
Hazleton, PA 18201

----- Clip and Mail -----

What is the benefit of membership?

Medicare and commercial insurance companies typically do not pay 100% for an emergency ambulance call. However, we are required to bill you for the balance owed unless you are a member of APTS. If you are a member, Medicare and commercial insurance carriers allow us to not send you a bill for the difference. **As a member, you will have no out of pocket expense. See the sample chart below.**

APTS is the one that responds to your 911 call!

Membership Benefit Comparison Chart

Members have NO out of pocket expenses. Last year alone, our members saved nearly \$20,000 just by becoming a member of APTS.

	<u>Member</u>	<u>Non-Member</u>
Sample Ambulance Bill	\$700	\$700
Primary Insurance Pays	\$300	\$300
Secondary Insurance Pays	<u>\$100</u>	<u>\$100</u>
Total Paid By Insurance	\$400	\$400
Balance Due	\$300	\$300
APTS Membership Coverage	100%	0%
Balance Owed by You	\$0	\$300

Take a moment now and enroll today!

We offer memberships for both individuals and families. Discounted memberships are available to all senior citizens. When we receive your enrollment form we will send your membership card within three to four weeks.

Visit us on the web at ***www.aptsEMS.com***. We are proud to be the primary ambulance provider for your community and stand ready to serve you when you need us!

Sincerely,

American Patient Transport Systems, Inc.

Please note: Any transport home from the hospital, to any out-of-town medical facility or any other transport other than a 911 call from the scene of your emergency to a local hospital, is not part of this membership plan.